



ISSUE #90 February 2012

# ivo Lab

## STRATOS® ARTICULATORS

### PRECISION

### FUNCTION

### DESIGN

Orders  
over \$400 now  
**FREIGHT FREE!\***



*\* Exclusions apply.  
Excludes GST.*



120° opening stop



Centric locking  
catch



45° incline support  
holder



Protrusion screw



Protrusive shift



Bennett angle  
setting



Side-shift setting



## Centric Tray

- Reliable determination of the centric relation
- Subsequent adjustments are reduced
- Reusable, hence time-saving and economical
- For indications in both complete and partial denture prosthetics conventional or implant supported
- Autoclavable



## Stratos 100

### - Average Value

- Fixed protrusive path of 30°
- Bennett angle of 15°
- Economically priced
- Fully integrated into the Stratos system
- 576820 (as pictured)



## Gnathometer

**Gnathometer "M" (incl. UTS Adapter) is an intraoral registration device that enables you to determine the occlusal position of edentulous patients.**

Needle-point tracing is used to check the occlusal position quickly and easily. The precision of this technique is particularly important in the fabrication of implant-supported dentures.



**2 only at this price**

## Universal Transferbow System - 3D

**The UTS 3D transfer system is suitable for TMJ-related model transfer into articulators.**

With the 3D registration joint, the registration data can be fixed with only one screw in just a few seconds. Due to the adjustable nosepiece, the UTS 3D can be universally set according to the Camper's Plane (CP) or the Frankfurt Horizontal (FH).



## Stratos 200

### - Semi Adjustable

- Universally applicable articulator for both fixed and removable prosthesis
- Large model mounting space
- Easy open access to models
- Expandable system with a wide range of accessories
- 536381 (as pictured)



## Stratos 300

### - Fully Adjustable

- Designed to provide a full range of condylar adjustments
- Ability to personalise the settings of the articulator to better simulate the patient's jaw movements
- 576821 (as pictured)



## Personalised Assortment

- Plane indicator
- Bite fork support
- CE registration joint holder
- Incisal plates
- 590221



## Average Value Assortment

- Instrument carrier
- Horizontal guide
- 2D setting-up template
- Set-up table
- 536382



## 3D setting-up template

For correct tooth set-up of personalised models in conjunction with the transferbow taking the Spee and Wilson curves into account.

- 536398



## Programat<sup>®</sup> EP 3000<sub>G2</sub>

The new generation of the EP 3000 is the all-rounder in the laboratory. The combi furnace may be used as both a press furnace and a ceramic furnace.

The new design of the membrane-sealed keypad in combination with the monochromatic display provides for even simpler operation. Due to the integrated Power Saving Technology, the energy consumption in the stand-by mode can be reduced by up to 40%. This saves money and is friendly to the environment.

- The QTK muffle technology enables homogeneous heat irradiation
- Electronically controlled press drive
- CDS – Crack Detection System
- Easy, extremely precise and automatic temperature calibration
- Removable furnace head for easy transportation and maintenance
- Broad range of programs
- USB interface

all ceramic  
all you need

PRESSING and FIRING

Results that defy conventional expectations!

Special programmes for **e.max<sup>®</sup> Press Multi**

## Perfecta 300 Handpieces

### Knee, foot or table control units

With the Perfecta 300 you have a powerful laboratory device at your fingertips which can be used for a variety of purposes and which can bring your ideas and those of your customers effortlessly to life.

- Time saving due to blow out function
- Ergonomic operation by means of the operating controls
- All functions and operating conditions in sight
- Automated modes
- 2-year warranty

W&H



WH LA323F

Foot control

WH LA323K

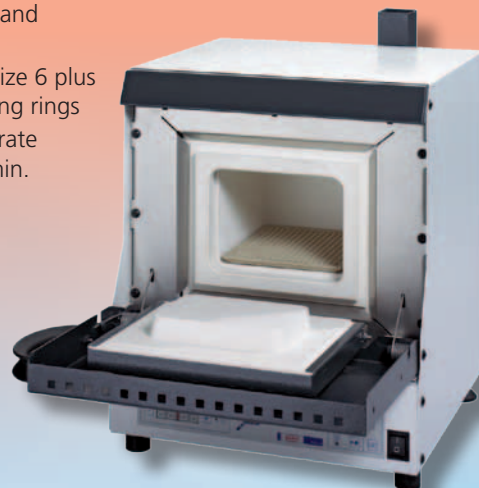
Knee control

## Magma Preheating Furnace

This furnace unifies all the main elements necessary for pre-heating, all in one machine. Offering top-of-the-line technology:

- PtRhPt temperature sensor
- 4-sided heating chamber
- Hidden heating elements
- Excellent ergonomics for best possible operation, programming and ventilation
- Space for 4x size 6 plus 3x size 3 casting rings
- Max. heat-up rate 900°C in 60 min.
- R2300-0000

Renfert



# Crown & Bridge



## IPS e.max® – one system for every indication

Overcoming the challenges of everyday laboratory work has never been easier – with IPS e.max®, the system that covers the entire spectrum of all-ceramic indications, from thin veneers to 12-unit bridges.

IPS e.max combines uniqueness with high performance in the most impressive way, as it comprises materials that demonstrate exceptional aesthetics as well as high strength.

These materials are available for both press and CAD/CAM applications.

The decision to use IPS e.max is a decision to take advantage of the unlimited possibilities of all-ceramics and to benefit from easy handling and outstanding aesthetics. The requirements and aims of every case differ. IPS e.max meets these requirements, because due to the system components, you obtain exactly what you need.

### IPS e.max® Press

**IPS e.max Press Lithium disilicate: versatile and aesthetic**

Experience the versatility of IPS e.max Press lithium disilicate glass-ceramic (LS2). It offers the fit, form and function expected from pressed ceramics. In addition, it exhibits a **unique strength of 400 MPa** and outstanding aesthetics.



### IPS e.max® CAD-on

**Glass-ceramic Fusion Process**

The IPS e.max CAD Crystall./Connect fusion glass-ceramic is used to fuse the IPS e.max CAD veneering structure to the IPS e.max ZirCAD framework. The Ivomix (vibrator unit) is used for the processing of the fusion glass-ceramic.



### IPS e.max® Ceram

**The highly aesthetic layering ceramic for the entire IPS e.max system**

IPS e.max Ceram provides lifelike, highly aesthetic results with true-to-nature light scattering and a balanced relationship between brightness and chroma. The advantages are an exact shade match and a single, universal layering diagram.



### IPS PressVEST Speed

**For fantastic press results with excellent crack resistance and the least amount of reaction layer**

IPS PressVEST Speed is a phosphate-bonded investment material for the speed heating technique (during the day). The investment material is ideally used with IPS e.max Press and ZirPress pressed ceramics in the EP3000 and EP5000 press furnaces.



### IPS e.max® Press Multi

**The first polychromatic press ingot**

IPS e.max Press Multi is the first polychromatic ingot for the press technology. It is suitable for the fabrication of highly aesthetic monolithic anterior and posterior crowns and veneers which show a lifelike shade transition from the dentin to the incisal. Time-consuming layering is a thing of the past if this ingot is used to fabricate restorations. As a result, this ingot meets exacting demands with regard to both aesthetics and efficiency.

**COMING SOON!**



# Crown & Bridge



## Variolink<sup>®</sup> Veneer

### Light-cure resin cement for veneers

- Variolink Veneer offers 7 light-cured value shades to enhance the aesthetics of the final restoration
- The Medium Value (MV 0) is translucent and neutral with only little effect on the final restoration
- The High Values brighten or increase the value
- Low Values provide a "warming" effect to the final restoration - will not discolour marginal areas over time
- High shade stability due to a specific amine-reduced formulation
- Easy removal of excess
- Low wear, good polishing properties
- High bond strength

### Indications

- Adhesive cementation of translucent all-ceramic restorations with a thickness of < 2.0 mm (veneers, inlays, onlays)

### Shades

- High Value +3, High Value +2, High Value +1, Medium Value 0, Low Value -1, Low Value -2, Low Value -3

## Variolink<sup>®</sup> II

### Dual-curing resin cement for all-ceramics

- Available in 6 shades and two degrees of viscosity
- Very high radiopacity
- Fluoride release
- Reduced sensitivity to light - longer with-holding time
- High abrasion resistance
- Long-term clinical experience: over 30 million restorations placed in the course of more than 15 years

### Indications

- Adhesive cementation of ceramic, Ceromer/FRC, and composite restorations (inlays, onlays, crowns, and veneers, as well as metalfree bridges)

### Shades

- Transparent, white (110/A1), yellow/universal (210/A3), brown (340/A4), white opaque, bleach XL Catalyst is available in two viscosities and shades

## Multilink<sup>®</sup> Automix



### Universal resin cement, self-cure with light-cure option

This self-curing luting composite with light-curing option is universally suitable for the adhesive cementation of indirect restorations.

- Strong hold on all surfaces
- Universal application
- Straightforward use
- Successful and proven
- Easy clean-up

### Indications

Cementation of indirect restorations (inlays, onlays, crowns, bridges, endodontic posts) made of:

- Metal-ceramic (PFM)
- All-ceramics (silicate)
- Reinforced all-ceramics (zirconium and aluminium oxide)
- Composites and fibre-reinforced composites (FRC)
- Alloys

### Shades

- Transparent, yellow, opaque



# Consumables

## Light Tray

The light-curing tray material is used to fabricate customised trays for fixed and removable implant-restorations. In addition, Light Tray forms a stable base for bite registrations and wax try-ins.

### Advantages

- Mouldable
- Fast and easy working procedure
- Accurate adaptation
- Stability of shape immediately after polymerisation
- Excellent elastic memory

### Indications

- Customised impression trays for impressions of implant situations
- Base plates
- Mounting of intraoral records

### Colours

- Pink or White



## Cobra Abrasives

This abrasive contains one of the hardest materials: aluminium oxide (Al<sub>2</sub>O<sub>3</sub>).

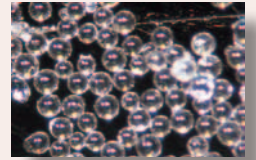
- Extremely sharp-edged
- Low to very high abrasive effect dependant on size
- Extremely pure – approx. 99.7% Al<sub>2</sub>O<sub>3</sub>
- Less than 0.06% SiO<sub>2</sub> impurity – according to DIN 8201 there is no danger of silicosis
- Low dispersion of grain sizes
- 5kg – 50, 90, 110, 125 & 250µm
- 20kg – 50 & 110µm



## Rolloblast Abrasives

Non-abrasive glass beads for smoothing and condensing surfaces.

- Guarantees silky matt surface with low light reflection
- 5kg – 50 & 100µm



## Superglue

- Renfert Cyanoacrylate glue
- Ideally suited for quick secure adhesion of many materials used including; plaster, acrylic, metal, glass, porcelain.
- Available in Strong, Multipurpose, Odourless, Concret or Liquicol

**20% OFF\***



\* Applies to products shown only.

## Dynex Separating discs

Setting new standards for cutting and grinding

Dynex separating discs make cutting and grinding sprues and separating bridges a piece of cake.

The new, double fibre reinforced separating discs are considerably more effective and more economical to use.

They are available in three different sizes and are superior to customary discs in both cutting performance and wear.



**R57-0322**  
22 x 0.3 mm  
- the highly flexible one

**R57-0540**  
40 x 0.5 mm  
- the fast one

**R57-1040**  
40 x 1.0 mm  
- the strong one

## Giroform Base Plates

## Giroform Pins

## Giroform Putty



Silicone putty for placing and blocking the mould on the mould carrier.

- Saves plaster as well as subsequent trimming and grinding
- Lemon fragrance
- GIR 576461



**AMANNGIRRBACH**

# Orthodontics



## Bertoni 3-dimensional expansion screws

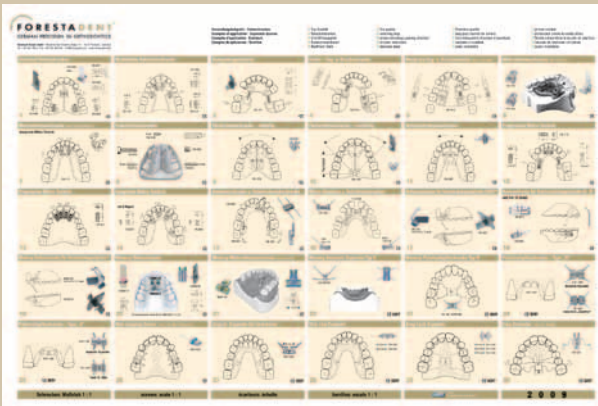


A combined transversal and protrusion screw for Y-plates.

- 13mm (3mm expansion)
- 165-1312 (Pkt 5 or each)

For 2 symmetrical transversal movements.

- 13mm (3mm expansion)
- 165-1412 (Pkt 5 or each)



### Poster

Showing examples of application.

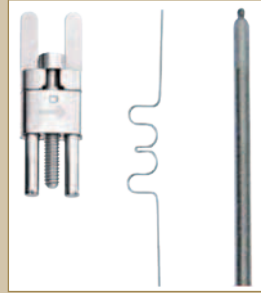
- 100-0016

Ask for your **FREE** copy today



## Forestacryl - Clear

- 1kg 401-0010 Powder
- 500ml 402-0010 Liquid



## Frog Appliance Kit

Simplified molar distalizer.

- 1 Patient Kit 169-1000



## Forestanit - Spring Hard

- 0.5 - 1.2mm
- Nickel available on request

## Expansion screws



For transversal and distal expansion.

- 3.1 x 11mm
- 100-2000 (Pkt 10)



For stable upper jaw plates, also activators.

- 3.3 x 11mm
- 150-2000 (Pkt 10)



## Fan type expansion screw

Hinge & screw supplied as 2 separate components.

- 105-1320 (Pkt 10)



## Chocolate Bar Bonus!

Free chocolate bar with every order over \$60.00

(Limit of one chocolate bar per order)

# Plaster & Stone

## Hinristone X-Fast

Hinristone X-Fast is an exceptionally fast setting stone with an early high compressive strength. Because it is fast setting, hand mixing is recommended. Hinristone X-Fast is compatible with all impression materials and its versatile, light pink colour makes it suitable for many uses including:

- Bleaching trays
- Mouth guards
- Vacuum formed splints
- Custom trays
- Orthodontic appliances
- Temporaries
- Denture repairs
- Study casts
- Articulator cast mounting
- CAD-CAM restorations
- Type 4 stone



**NEW**

## Hinrivest KB + Liquid

### Class 1 + 2, type 1

A speed casting phosphate-bonded universal investment for casting all types of precious and non-precious alloys in crown and bridge and combined techniques.



**NEW**

## Hinridur® S

### Synthetic stone Type 3

A creamy synthetic hard stone especially suitable for prosthetics and orthodontics. The super-white colour is specially recommended for orthodontics work, and the yellow for working models.

- Yellow & Super-White



**NEW**

# Courses & Events - 2012



Dates	Course/Event	Instructor	Location	Workshop/Seminar for
23 - 24 February	IPS e.max Certification Level 1	Deona Grobler-Murray	ICDE Auckland	Dental Technicians
19 - 22 September	Hot Topics in the Tropic - Cairns	International & local speakers	Cairns, Queensland	Dentists, Dental Technicians & Auxiliaries

For detailed course information, phone Caroline Jones on (09) 914 9999 Note: Courses scheduled are subject to change.



Candulor

## Aesthetic Color Sets - Easy

For gingival characterisation of denture base material (Hot or Cold Cure)

Ready-mixed colours in three different shades provide you with a simple and rapid means of producing individually selected gingival colour tone. Their semi-opaque pigmentation refracts and reflects the incident light, giving the artificial tissue its natural pink hue.

- CAND 31130010 - Cold
- CAND 31230010 - Hot



## Diamond Burs

Sintered diamonds

**MEISINGER**  
...partner for precision



**807S**  
029 /104



**837S**  
027 /104



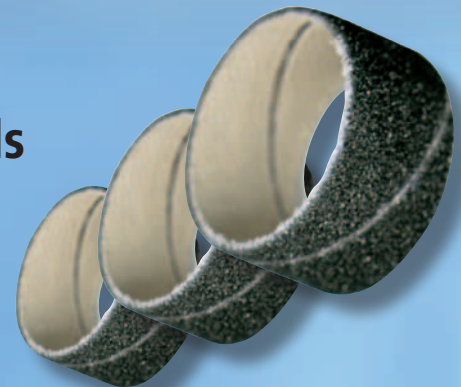
**838S**  
0050 /104



**852S**  
021 /104

## Keystone Arbor Bands

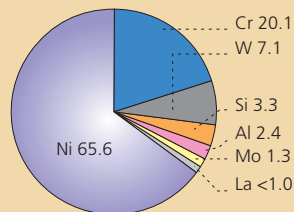
- 3/4" for lathes
- Medium & Coarse



## Colado® NC

Colado NC (Nickel Chrome)

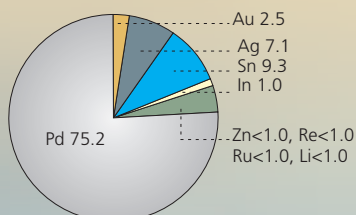
- Light oxide
- High temperature strength for accurately fitting restorations
- CTE 14.0
- Type 5
- White
- 25g Pkt



## Callisto 75 Pd

Palladium-based alloy for fixed restorations (metal-ceramic layering technique and particularly for the PoM technique, full-cast restorations, milling technique and implant superstructures).

- Wide range of indications
- Excellent melting and casting properties resulting in a homogeneous microstructure
- Easy handling and polishing properties
- 10.8 g/cm<sup>3</sup> density
- Type 4
- White
- 25g Pkt



## WDMS Casting Rings

- Manufactured of the highest quality PVC material
- Allows equal expansion in all directions
- Produces precision castings
- New, improved interlocking tapered Ring & Base
- Will not accidentally separate
- Easy Clean-up



### Round Ring / Base Set

Available Sizes: 1.25 " (60 grams), 1.5 " (90 grams), 2" (180 grams), 2.5 " (270 grams)

### Round Ring Only

Available Sizes: 1.25 " , 1.5 " , 2" , 2.5 "

### Round Base Only

Available Sizes: 1.25 " , 1.5 " , 2" , 2.5 "